

FANCY SUSHI

JAPANESE GRILL & SUSHI BAR
DINE IN • CARRY OUT

WE SERVE BEER, WINE & SAKE

WWW.FANCYSUSHI.COM

1478 SADLER ROAD,
FERNANDINA BEACH, FL 32034

T. 904.261.9855

F. 904.261.8938

Open Hours

Monday Closed

Tue. - Thurs. 11am - 10pm

Fri. & Sat. 11am - 11pm

Sun. 12noon - 10pm



AIA

PUBLIX

SADLER RD.

N

14TH AVE.

**FANCY
SUSHI**

ENTRESS FROM KITCHEN

Include Soup, Salad, Rice

HIBACHI GRILLED (TEPPANYAKI)

w. Noodles and Vegetable

E1.	VEGETABLE	12.95
E2.	CHICKEN	14.95
E3.	STEAK	18.95
E4.	SHRIMP	18.95
E5.	SCALLOP	19.95
E6.	KING SALMON	19.95
E7.	FILET MIGNON	21.95
E8.	LOBSTER	26.95
E9.	SHRIMP & CHICKEN	19.95
E10.	STEAK & CHICKEN	20.95
E11.	STEAK & SHRIMP	20.95
E12.	KING SALMON & STEAK	20.95
E13.	KING SALMON & SHRIMP	20.95
E14.	SHRIMP & FILET MIGNON	21.95
E15.	SCALLOP & SHRIMP	21.95
E16.	FILETMING & LOBSTER	26.95

TERIYAKI

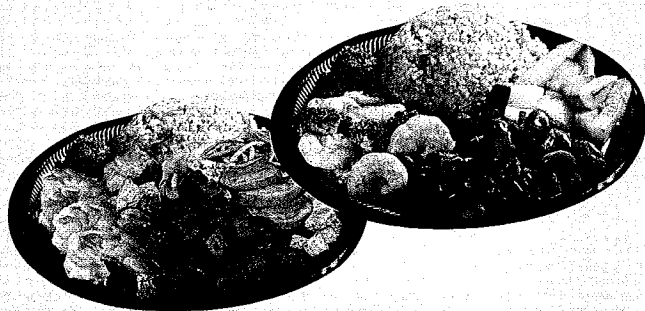
Grill and Served with Teriyaki Sauce

E17.	VEGETABLE	11.95
E18.	CHICKEN	14.95
E19.	SALMON	18.95
E20.	STEAK	18.95
E21.	TOFU (DEEP FRIED)	14.95
E22.	RED SNAPPER	17.95

KATSU

Japanese Cracker Breaded & Deep Fried w.
Katsu Sauce and Hibachi Vegetable

E23.	PORK	14.95
E24.	CHICKEN	14.95
E25.	SALMON	18.95



TEMPURA

Lightly batter deep fried to perfectly crispy.

E26.	VEGETABLE	11.95
E27.	CHICKEN W. VEGETABLE	14.95
E28.	SHRIMP W. VEGETABLE	16.95

UDON

Pan fried Japanese noodles w. vegetable.
Served w. Soup & Salad

E29.	CHICKEN	13.95
E30.	SHRIMP	15.95



ENTREES FROM SUSHI BAR

Served w. Soup & Salad
Chef's Choice

B1.*	SUSHI REGULAR 8 pcs. and California roll.	18.95
B2.*	SUSHI DELUXE 10 pcs. and California roll.	20.95
B3.*	SASHIMI REGULAR 12 pcs. of assorted raw fish.	20.95
B4.*	SASHIMI DELUXE 16 pcs. of assorted raw fish.	24.95
B5.*	SUSHI SASHIMI COMBO 8 pcs. of sushi, 8 pcs. sashimi, California roll, tuna roll.	31.95
B6.*	CHIRASHI Assorted raw fish over sushi rice.	19.95
B7.*	FANCY LOVE BOAT 12 pcs. of sushi, 16 pcs. of sashimi, 1 special roll, 1 California, 1 salmon roll.	66.95

FANCY SUSHI SPECIAL

1. GINZA 12.95
Spicy tuna deep fried w. house special sauce,
top with spicy krab, crunchy, scallion.
- 2.* JAX 11.95
Shrimp, tempura, spicy tuna on top.
- 3.* KELMON 11.95
Spicy tuna, krab inside fresh
salmon, spicy sauce on top.
- 4.* U.S.A. 10.95
California roll, tuna, salmon, red snapper,
chopped down put in the top spicy.
5. HWY. 17 10.95
Smoked salmon, krab stick, cream cheese, deep
fried, hot sauce, shrimp Sauce on top.
- 6.* FANCY DRAGON 11.95
Shrimp tempura roll, smoked salmon, eel, fish egg on top.
7. GREEN DRAGON 10.95
Eel cucumber, avocado on top.
- 8.* LUCKY DRAGON 11.95
Eel avocado with fresh tuna on top, fish egg, scallion.
9. VOLCANO 11.95
Conch, mayo, krab stick, bbq, krab, avocado, cheese
10. CRUNCHY 10.95
Shrimp tempura, krabmeat, cucumber, crunchy
on top with house special sauce.
- 11.* FANCY SUSHI ROLL 13.95
Salmon, cheese, top with avocado,
spicy tuna, tempura crunchy, fish egg & radish.
- 12.* FANCY Q ROLL 13.95
Spicy tuna, avocado inside, avocado, escolar
on top, eel sauce on top
- 13.* AMAZING ROLL 13.95
Shrimp tempura, avocado inside, tempura
shrimp, krab, red tobiko, wasabi tobiko,
strawberry on top
14. FANCY MANGO 12.95
Salmon katsu, cheese inside,
mango on top, eel sauce on top
- 15.* EMERALD ROLL 12.95
Salmon, avocado inside, avocado on the top
wasabi tobiko on the full top

SUSHI A LA CARTE

(1 pc. of Sushi or Sashimi)

RAW

- | | | |
|------------------------------|-------------------------------|-----------------------------|
| 1. TUNA 2.65 | 8. SPICY FLYING FISH EGG 2.25 | 14. IKURA (SALMON ROE) 3.50 |
| 2. SALMON 2.45 | 9. OCTOPUS 2.45 | 15. SURF CLAM 2.25 |
| 3. YELLOWTAIL 2.65 | 10. SCALLOP 2.45 | 16. QUAIL EGG (ADD ON) 0.95 |
| 4. SQUID 2.25 | 11. SPICY SCALLOP 2.95 | 17. SMOKED SALMON 2.65 |
| 5. CONCH 2.25 | 12. WHITE FISH 2.25 | |
| 6. ESCOLAR (WHITE TUNA) 2.45 | 13. SWEET SHRIMP 3.50 | |
| 7. FLYING FISH EGG 2.25 | | |

COOK

- | | | |
|---------------------|----------------|----------------------|
| 2.* KRAB STICK 2.25 | 4. SHRIMP 2.25 | 6. EGG 2.00 |
| 3. MACKEREL 2.25 | 5. EEL 2.75 | 7. BABY OCTOPUS 2.20 |

SUSHI ROLL

RAW

1. TUNA 5.55
2. SALMON 5.25
3. YELLOWTAIL 5.55
4. SPICY TUNA 6.95
5. SPICY SALMON 5.95
6. CRAZY TUNA ROLL 10.95
Tuna, avocado top with spicy tuna.
- 7.* HOUSE ROLL 8.75
Fish egg, krab, tuna, salmon, cucumber & cheese.
8. RAINBOW 10.95
Red Snapper, tuna, salmon & California roll.
9. TNT ROLL 7.25
Tuna, yellowtail & shrimp sauce.
10. ALASKA ROLL 5.75
Fresh salmon, avocado & cucumber.
11. JB Smoked salmon cheese 5.75
12. CRAZY SHRIMP tempura roll & smoked salmon on top. 9.25

COOK

- 1.* ROCK N ROLL 7.95
Shrimp, tempura krab, cheese.
- 2.* DYNAMITE Salmon, krab, cheese, deep fried. 8.25
3. SALMON SKIN & CUCUMBER 4.95
- 4.* CALIFORNIA 5.55
- 5.* PHILADELPHIA Krabmeat & cream cheese 5.55
6. EEL & CUCUMBER 7.25
7. BOSTON Shrimp, mayo & lettuce. 5.25
- 8.* KRAB STICK 4.75
9. SHRIMP With mayo, cucumber. 5.25
10. SOFT SHELL CRAB 9.95
11. JAGUAR Eel, avocado, deep fried. 8.55
12. SALMON KATSU Cheese, avocado. 6.95
13. LOBSTER w. Mayo, cucumber, avocado. 9.95
- 14.* TOKYO Shrimp, krab stick, crunchy. 6.75
- 15.* SNOW KRAB 5.95
16. SHRIMP TEMPURA 6.75
17. CUCUMBER 4.25
18. AVOCADO 4.25
19. FISH TEMPURA 6.75
20. VEGGIE COMBO 6.25
21. FUTOMAKI 6.95

LUNCH SPECIAL

11:00AM - 3:00PM

From Kitchen Include Soup, Salad, Steamed Rice or Fried Rice

From Sushi Bar Include Soup, Salad

HIBACHI

L1.	SHRIMP	10.50
L2.	SCALLOPS	10.95
L3.	CHICKEN	9.50
L4.	STEAK	10.50
L5.	VEGETABLE	8.75
L6.	COMBINATION	11.95

Any two items above.

TEMPURA

L7.	CHICKEN	9.50
L8.	SHRIMP	9.95
L9.	VEGETABLE	8.50

KATSU

L10.	CHICKEN	9.50
L11.	PORK	9.50

TERIYAKI

L12.	CHICKEN	9.50
L13.	STEAK	10.50
L14.	RED SNAPPER	10.50
L15.	SALMON	10.95

SUSHI

L16.*	SUSHI LUNCH 6 pcs. of sushi and California roll.	12.95
L17.*	SASHIMI LUNCH 10 pcs. of slices of raw fish.	13.95
L18.*	SASHIMI & SUSHI COMBINATION 6 pcs. of sashimi, 4 pcs. of sushi, 1 California roll.	15.55
L19.*	MAKI 2 LUNCH	10.95
L20.*	MAKI 3 LUNCH	13.95

CHOICE FROM:

TUNA ROLL	PHILADELPHIA ROLL
ALASKA ROLL	KRAB STICK ROLL
JB ROLL	BOSTON ROLL
SPICY ESCOLAR ROLL	SNOW KRAB ROLL
SALMON ROLL	CUCUMBER ROLL
YELLOWTAIL	AVOCADO ROLL
ESCOLAR ROLL	EEL CUCUMBER ROLL
SPICY TUNA ROLL	VEGGIE COMBO ROLL
SPICY SALMON ROLL	SALMON SKIN CUCUMBER ROLL
CALIFORNIA ROLL	SHRIMP TEMPURA ROLL